

www.season-lao.com

凜
spirit of Snow
Season Lao Handmade paper Photo

雪で覆われた厳しい風景に、なぜか温かみを感じる物。
人とともに姿を変えてきた自然、そのままの自然。
積み重ねられてきた物語。、繊細な光景、未来、禅の世界。、
人と自然のあり方を模索した心象作品群。

作品は自然の持つあたたかみを表現するため、
手漉き紙を使用している。

写真におさめた瞬間は又と無く
天然素材紙もまた一枚ずつ散見される楮(こうぞ)の繊維が異なり、
唯一無二の存在であることを引き立たせている。

撮影地、北海道に初めて訪れたのは二〇〇九年の事であった。

故郷であるマカオは今も急速な経済発展を続けている。

写真や映像活動を通して、

マカオの古き良き文化を伝承していきたいという思いが強く、

中国、ポルトガル、アジアや欧米等、

海外にも出向き活動が続けていた。

活動の中で出会った小さな町に魅力を感じ、

純朴な北国の小さな町の風土を感じたいとの思いが生まれ、

北海道の伊達市を訪れた。

そこで雪景色に魅せられ、

現在も北海道を拠点とした作品作りを続けている。



Biei, Hokkaido, Japan 2013

27 x 17.5cm

The snow covered landscape is harsh, yet somehow you can feel a trace of warmth.

People evolving with their nature, as well as nature alone, untouched.

The accumulated stories tell a tender scene, defying time in a world of zen.

Fumbling to find the ideal state of existence between man and nature.

To express the natural warmth, traditional paper handmade from the mulberry tree has been used.

As each piece of paper has a unique grain of fiber,
every moment captured through the lens is also unique.

Season Lao first visited Hokkaido - the location of the majority of these photographs,
in the winter of 2009. Born in Macau, which in recent years has undergone a peculiar and rapid
economic development. Through photography and video works, he hopes to pass on the culture of the
Macau he grew-up in. As his explosion took him abroad, first to China, and then Portugal, Asia, Europe
and America, he began recalling his childhood neighborhood, the charm of simplistic small-town life.
On the way he stumbled upon a tiny town in snowy northern Japan, Date-shi, Hokkaido.
There he was inspired by the honest spirit of the rustic countryside, at that moment he decided to
continue his work based from Hokkaido.



Hokkaido, Japan 2014

40.3 x 27.5cm



Hakodate, Hokkaido, Japan 2009

18 x 28cm



Yubari, Hokkaido, Japan 2012

23.5 x 35cm



Asarigawa, Hokkaido, Japan 2012

23.5 x 35cm

눈으로 덮인 엄숙한 풍경에 어찌서인지 따뜻함도 느껴지는 것.
인간과 함께 모습을 바꾸어 간 자연, 그대로의 자연.
"겹겹이 쌓여 온 이야기. "섬세한 풍경, 미래, 선(禪)의 세계"
인간과 자연의 본연의 모습을 모색한 심상작품들.

작품은 자연이 가진 따뜻함을 표현하기 위해 손으로 뜯 종이를 사용하고 있다.
천연소재의 종이 역시 한 장 한 장이 군데군데 보이는 닳나무의 섬유가 다르며,
사진에 담긴 순간이 유일무이한 존재라는 것을 돌보이게하고 있다.

촬영지인 홋카이도에 처음 온 것은 2009년이었다.
고향인 마카오는 지금도 급속한 경제발전을 이루고있다.
사진이나 영상활동을 통해 마카오의 오래된 좋은 문화를 계승해 나가고 싶다는 마음이
강해, 중국, 포르투갈, 아시아, 유럽, 등 해외에서도 활동을 계속하고 있다.
활동하면서 만난 작은 마을에 매력을 느껴, 순박한 북쪽나라의 작은 마을의 풍토를 느끼고
싶다는 생각이 들어 홋카이도 다테시를 찾았다.
그곳에서 설경에 반해, 현재까지도 홋카이도를 거점으로 작품활동을 이어오고 있다.



Otaki, Hokkaido, Japan 2009

30 x 19cm



Chitose, Hokkaido, Japan 2014

27.3 x 40.5cm

白雪覆蓋的嚴峻風景，為何卻感到一絲暖意。
與人共生演變的大自然，原來的大自然。
一個又一個被積累的故事。纖細的光景、未來，禪的世界。
摸索人與自然的心象作品系列。

為了呈現自然而來的暖意，作品結合傳統手製紙製作。
每一次鏡頭捕捉的瞬間，也是攝影中的一期一會。
每一張天然素材紙，自然地散布不同的植物纖維，
讓獨一無二存在的概念不謀而合。

初次到訪拍攝地－北海道 是二零零九年的寒冬。
藝術家處在經濟急速發展中的故鄉澳門，
透過攝影與影像的活動，期望探索與傳承澳門的獨有文化，
活動擴展至海外、從中國、葡萄牙，亞洲與歐美等地，
從中讓他重遇純樸小城的魅力。
感受大自然的北國小城風土想法油然而生。
次年，獨赴日本北海道伊達市。
在那裏被雪國意境所打動，
時至今天也以北海道為據點進行作品創作。



Bibai, Hokkaido, Japan 2015

40.5 x 27.3cm



Bibai, Hokkaido, Japan 2015

27 x 17.5cm



Bibai, Hokkaido, Japan 2015

28 x 18cm



Toyama, Japan 2015

49.5 x 32.5cm



Kamishihoro, Hokkaido, Japan 2014

40.5 x 27.3cm



Chitose, Hokkaido, Japan 2014

40.5 x 27.3cm



Hokkaido, Japan 2015

40.5 x 27.3cm



Toyama, Japan 2015

40.5 x 27.3cm



Toyama, Japan 2015

28 x 18cm



Hokkaido, Japan 2014

28 x 18cm



Chitose, Hokkaido, Japan 2013

28 x 18cm



Hokkaido, Japan 2013

40.5 x 27.3cm



Biei, Hokkaido, Japan 2013

28 x 18cm



Asarigawa, Hokkaido, Japan 2015

28 x 18cm



Hokkaido, Japan 2014

28 x 18cm



Biei, Hokkaido, Japan 2013

28.3 x 18cm



Biei, Hokkaido, Japan 2013

28.5 x 19cm



Biei, Hokkaido, Japan 2013

58 x 39cm



Biei, Hokkaido, Japan 2013

38.8 x 57.8cm



Hokkaido, Japan 2014

28 x 18cm



Yubari, Hokkaido, Japan 2012

28.3 x 18cm



Hokkaido, Japan 2014

27 x 17.5cm



Hokkaido, Japan 2014

28 x 18cm



Bibai, Hokkaido, Japan 2015

28 x 18cm



Asarigawa, Hokkaido, Japan 2015

40.5 x 27.3cm



Bibai, Hokkaido, Japan 2015

28 x 18cm



Bibai, Hokkaido, Japan 2015

28 x 18cm



Toyama, Japan 2015

28 x 18cm



Hokkaido, Japan 2014

28 x 18cm



Toyama, Japan 2015

28 x 18cm



Biei, Hokkaido, Japan 2013

28 x 18cm



Chitose, Hokkaido, Japan 2014

28 x 18cm



Bibai, Hokkaido, Japan 2015

28 x 18cm



Bibai, Hokkaido, Japan 2015

28 x 18cm



Bibai, Hokkaido, Japan 2015

28 x 18cm



Hokkaido, Japan 2014

28 x 18cm



Chitose, Hokkaido, Japan 2014

28 x 18cm



Hokkaido, Japan 2014

28 x 18cm



Hokkaido, Japan 2014

28 x 18cm



Hokkaido, Japan 2014

28 x 18cm



Chitose, Hokkaido, Japan 2013

28 x 18cm



Hokkaido, Japan 2014

28 x 18cm



Toyama, Japan 2015

40.5 x 27.3cm



Chitose, Hokkaido, Japan 2014
18 x 28cm



Bibai, Hokkaido, Japan 2015
23.5 x 35cm



Yubari, Hokkaido, Japan 2009

49.5 x 32.5cm



Bibai, Hokkaido, Japan 2015

28 x 18cm



Yubari, Hokkaido, Japan 2012

25.5 x 17.3cm



Hakodate, Hokkaido, Japan 2009

25.5 x 16.5cm



Hakodate, Hokkaido, Japan 2009
23.5 x 21cm



Date, Hokkaido, Japan 2009
18.3 x 28cm



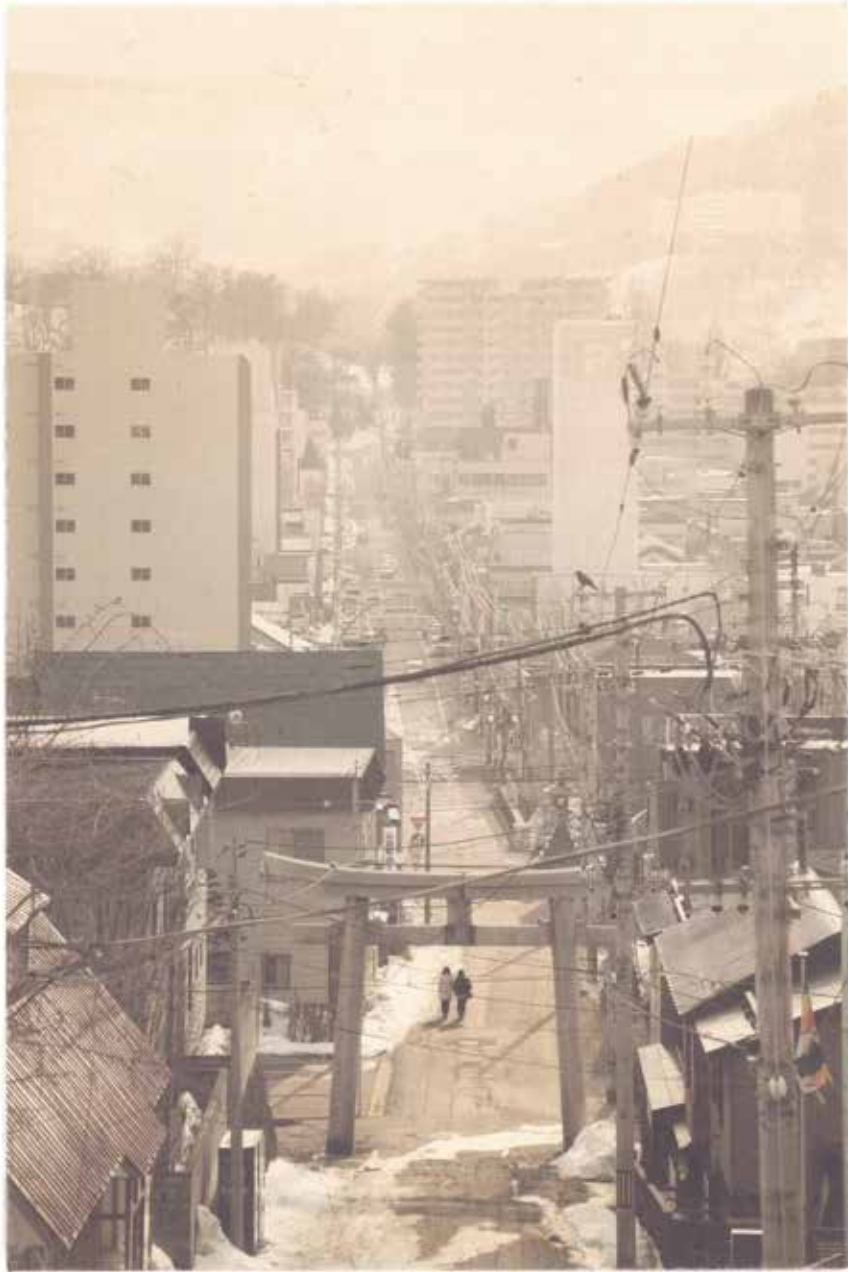
Hakodate, Hokkaido, Japan 2009

26.5 x 17.4cm



Sapporo, Hokkaido, Japan 2013

28 x 18.8cm



Otaru, Hokkaido, Japan 2012

32 x 48cm



Hakodate, Hokkaido, Japan 2009

280 x 19.7cm



Date, Hokkaido, Japan 2009

49.5 x 32.5cm



Hokkaido, Japan 2014

28 x 18cm



Yubari, Hokkaido, Japan 2012

25.8 x 17.5cm



Yubari, Hokkaido, Japan 2012

27 x 17.5cm



Asarigawa, Hokkaido, Japan 2012

25.3 x 17.3cm



Asarigawa, Hokkaido, Japan 2013

40.5 x 27.3cm



Yubari, Hokkaido, Japan 2012

35.5 x 23.5cm



Otaru, Hokkaido, Japan 2013

40.3 x 27.3cm



Yubari, Hokkaido, Japan 2012

35 x 23.5cm



Otaki, Hokkaido, Japan 2009

25.3 x 17.5cm



Furano, Hokkaido, Japan 2013

40.3 x 27.5cm



Otaki, Hokkaido, Japan 2009

28 x 17cm



Nibutari, Hokkaido, Japan 2013

28 x 19cm



Hakodate, Hokkaido, Japan 2009

18.5 x 28cm



Asarigawa, Hokkaido, Japan 2012

28 x 15.3cm



Sounkyo, Hokkaido, Japan 2013

58 x 38cm



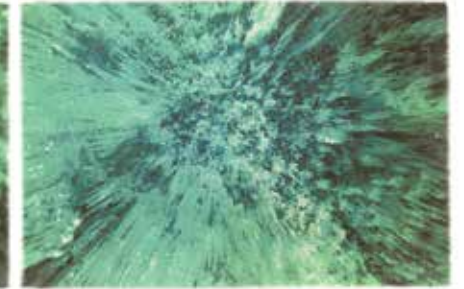
Sounkyo, Hokkaido, Japan 2013

58 x 38cm



Shikotsuko, Hokkaido, Japan 2011

28 x 18.8cm



Shikotsuko, Hokkaido, Japan 2011

28 x 18.8cm



Abashiri, Hokkaido, Japan 2013

58 x 38cm



Abashiri, Hokkaido, Japan 2013

58 x 38cm



Abashiri, Hokkaido, Japan 2013

58 x 38cm



Abashiri, Hokkaido, Japan 2013

58 x 38cm



手漉き紙を使用しています

traditional paper handmade from the mulberry tree has been used

写真におさめた瞬間は又と無く、手漉き紙一枚一枚の漉の繊維の表情も異なり、世界でただ一つの作品となっています
As each piece of paper has a unique grain of fiber, every moment captured through the lens is also unique.



各作品、同サイズにつき5-15枚
限定版となっています
each picture in the same size
available in 5 limited edition
prints

販売形態
(額装、竹ひご、証明書付き)
artwork with (frame set, thin
strip of bamboo, certificate of
authenticity.)

各作品3サイズございます
each photograph available in 3
different size

築成? 分解? "Completion? Demolition?" on handmade paper



Macao 2009

58 x 38cm



Macao 2009

58 x 38cm



Macao 2009

58 x 38cm



Macao 2009

58 x 38cm



Macao 2009

58 x 38cm



Macao 2009

58 x 38cm

百年菜荳圍 "Pátio do Mungo" on handmade paper



Macao 2009

58 x 38cm



Macao 2009

58 x 38cm



Macao 2009

58 x 38cm



Macao 2009

58 x 38cm



Macao 2009

58 x 38cm



Macao 2009

58 x 38cm



Kaiping (China) 2010
27.3 x 40.3cm



Kaiping (China) 2010
58 x 38cm



Kaiping (China) 2010
40.5 x 27cm



Kaiping (China) 2010
58 x 38cm



Kaiping (China) 2010
28 x 18cm



Kaiping (China) 2010
28 x 19cm



Wuzhou (China) 2010
28 x 18.8cm



Guangzhou (China) 2006
28.3 x 18cm



Qingdao (China) 2010
40.5 x 25.8cm



Kunming (China) 2010
40.5 x 26.5cm



Kunming (China) 2010
28.3 x 19.5cm



Wuzhou (China) 2010
40.5 x 26.3cm



Yoichi, Hokkaido, Japan 2013
58 x 38cm



Otaru, Hokkaido, Japan 2013
40.5 x 27cm



Otaru, Hokkaido, Japan 2013
28 x 19cm



Zennibako, Hokkaido, Japan 2013
28.3 x 19cm



Takinoue, Hokkaido, Japan 2011
40.5 x 27.3cm



Barcelona (Spain) 2008
27.3 x 40.5cm



Barcelona (Spain) 2008
40.5 x 27.8cm



Brussels (Belgium) 2008
40.5 x 26cm



Évora (Portugal) 2008
40.3 x 25.8cm



Évora (Portugal) 2008
28 x 18.5cm



Barcelona (Spain) 2008
28 x 18.8cm



Lisbon (Portugal) 2008
40.5 x 21cm



Lisbon (Portugal) 2008
40.5 x 23.3cm



Brussels (Belgium) 2009
28 x 19cm



Lisbon (Portugal) 2008
28.8 x 18.8cm



San Francisco (US) 2010
28 x 19cm

Season Lao (劉善恆 / シーズン・ラオ / 시즌 라오)

Photography Artist / Designer / Creative Director for an Advertising Company

Born in Macao in 1987, at a young age he became interested in photography while travelling across China. While studying Multimedia Design at Macau Polytechnic Institute in the evening, he worked during the day for various advertising and web design companies. He won many awards for his art, and even designed souvenirs for Louis Vuitton.

As a 20 year old artist and photographer he was sponsored to go to Europe and America to work on various photography projects and exhibitions. He also began exploring Macau's culture through his work. His project "Pateo do Mungo", which included a documentary, photo exhibition and book, recorded the daily lives of the ethnic Chinese in the neighborhood where he grew up.

The following year, with a desire to experience simple and honest small town life, he went to Hokkaido Japan. In the snow covered village of Date-Shi he was inspired by the honesty of the serene winter landscape. He soon returned to Hokkaido to work as the Creative Director for a Sapporo based advertising company. At the same time, he worked on a solo project, examining the nature and zen of winter in a photography series printed on handmade traditional paper.

Parts of Exhibition

Solo Photo Exhibition 個展

- 2015 May 《凜 - spirit of snow》handmade paper photo exhibition - 茶廊法邑・品品法邑, Sapporo, Japan
- 2015 Apr 《凜 - spirit of snow》Hand-made Paper Photo exhibition - Khalifa gallery, Seoul, Korea
- 2015 Jan 《凜 - spirit of snow》Hand-made Paper Photo exhibition - Arte Piazza Bibai, Bibai, Japan
- 2014 Apr 29 - May 4 《凜 - spirit of snow》Hand-made Paper Photo - gallery kaede, Osaka, Japan
- 2014 Feb 《凜 - spirit of snow》Hand-made Paper Photo - selected by Aidem Photo Gallery 「シリウス」Presents 「プロキオン・フォース」、Gallery special exhibition, Tokyo, Japan
- 2014 Jan 《凜 - spirit of snow》Hand-made Paper Photo - gallery CAFE ESQUISSE, Sapporo, Japan
- 2013 Nov 《凜 - spirit of snow》Hand-made Paper Photo - Winkel Village Hokkaido condominium 北海道貸別荘, Asarigawa, Japan
- 2013 Oct 《凜 - spirit of snow》- (旧) 岡川薬局 Re: OKAGAWA PHARMACY Cafe Gallery, Otaru, Japan



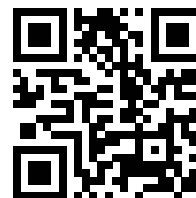
- 2013 May 《凜 - spirit of snow》- Creative Macau Macao
- 2012 Mar 《眠れる山々の光一夕張》(Eng : Yubari - the mountain waiting for wake up) 札幌資料館 Former Sapporo Court of Appeals, Sapporo, Japan.
- 2011 Oct 《北国の心象》(Eng : Glorious Memory in Hokkaido) Gallery cafe En, Sapporo, Japan.
- 2010 Feb 《百年菘菘園》(Por : Páteo do Mungo) The photobook launching ceremony and photo exhibition. 10Fantasia 瘋堂十號, Macao.
- 2008 「《Um Macaenseem Portugal》(Cn : 澳門人在葡國) シーズン・ラオ・シン・ハン、ポルトガル旅行個展」 Project releated video works (Portugal, Barcelona Spain, Brussels Belgium, California, US Vancouver Canada, Brazil, Macau)

Group Exhibition グループ展ほか

- 2015 Jan Group Exhibition 《공간의 재해석 Space Redefined》- JJ JoongJung gallery Seoul, Korea
- 2014 Nov Art fair 《ART FAIR SAPPORO ~ホテルの客室がギャラリー》 Sapporo, Japan
- 2014 Nov Art fair 《대구아트페어 Daegu Artfair 2014 Korea》 Daegu, Korea
- 2014 Nov Art fair 《ART FAIR SAPPORO ~ホテルの客室がギャラリー》 Sapporo, Japan
- 2014 Oct Contest 《KAWABA NEW-NATURE PHOTO AWARD 2014》川場村田園プラザ Gunma, Japan
- 2014 Sep Art festival 《第14届中国平遥国际摄影大展 The 14Th China Pingyao International Photography Festival》 Shansi, China
- 2014 Aug Art festival 《Art point IWAKI 芸術祭》- Iwaki city, Fukushima, Japan
- 2014 Apr 平成二十六年年度 小国芸術村特別展 小国地域ふるさと創生基金事業 《紙と伝》Oguni Art village special Exhibition (Eng : Paper and Trational) 小国芸術村 (芸術村会館) - Nagaoka, Niigata, Japan
- 2013 《Nov 2 + 1展》- shinjyuku ganka gallery, Tokyo, Japan
- 2013 Nov 《澳門文化藝術品收藏展- 澳門藝術家巡禮》(Eng : Ccfa Macao Pavilion-The Parade of Macao Artists) The Venetian Macao-Resort-Hotel, Macao
- 2013 Sep 《攝影作品數十 | 百呎公園特別計劃 @ 香港國際攝影節文化藝墟 2013》(Eng : Dozens of photography works" - 100FT. PARK's Special - HK International Photo Festival Flare 2013 HKDI & IVE) Hong Kong
- 2013 Sep 《第46回 道美展》札幌市民ギャラリー Sapporo Citizens Gallery Sapporo, Japan
- 2013 Aug 《写真インディペンデンス展》Higashikawa International Photo Festival, Higashikawa, Japan
- 2013 Jul 《心・景——澳門攝影新勢力 (80'後)》(Eng : Heartscape - Photography of Macao Post-80s) - 澳門藝術博物館 Macao Art Museum, Macao
- 2012/2013 《円山動物園アートアニュアル》(Eng : Art Annual of Maruyama zoo) Maruyama subway station Sapporo, Japan.
- 2009 May Product Design "LV Chinese Antique Trunk" at 부산국제디자인제 Busan International Design Festival, Busan, Korea.
- 2009 May 第五屆中國 (深圳) 國際文化產業博覽交易會 (Eng : International Cultural Industries Fair), ShenZhen, China.
- 2009 May Video artwork 《Macao Water Fountains》 shown at National Taiwan Museum of Fine Arts, Taiwan.

MORE

HP : www.season-lao.com



facebook : [season.lao](https://www.facebook.com/season.lao)

